



Machinen Trade Starting Hole Erosion



The Whole Spectrum of
Starting Hole Erosion For Your
Individual Requirements



HUBER

DANIEL BAYER TECHNICAL SOLUTIONS

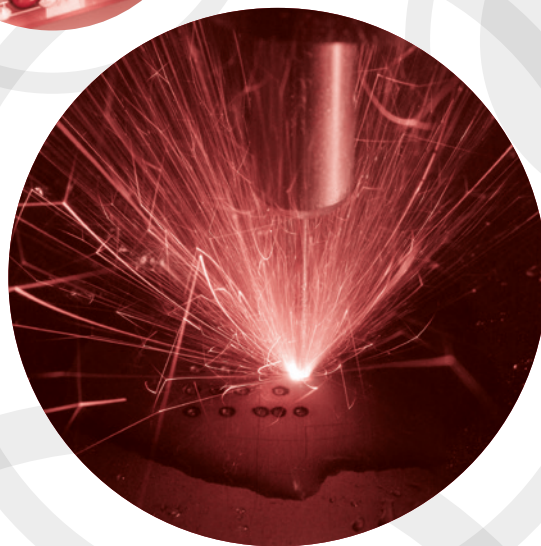


Reliable High-End Erosion Technology For Versatile Fields of Application



High productive efficiency, even when talking about special materials, the use of deionised water as rinsing liquid, and an excellent price/performance ratio are just some of the advantages characterising the wide machine portfolio of HUBER – Daniel Bayer Technical Solutions in Fürth. From small portable devices via fully equipped CNC machines (with automatic electrode changer (ATC) and guide changer (AGC) or swivelling working head) up to custom-tailored machines - at Huber, you receive competent advice, comprehensive service, as well as attractive offers even for individual customer solutions whenever you wish. Our trained and competent specialist personnel is at your disposal at any time for consultation, demonstration and other questions about our new and second-hand range of machines. Countless customers from various industrial sectors, even from aerospace engineering, assured themselves of the high efficiency and performance of our machines long time ago and have been among our customers ever since.

We are looking forward to a successful and trusting cooperation.







River 3



This new machine with its excellent price/performance ratio and full warranty is the low-cost entrance into starting hole erosion and therefore always the more sensible alternative to a used machine in the long run. As we have come to expect from Huber OCT machines, precision, superb quality, and elegant design are also integral part of this package which - even in case of an initially rather low drilling volume - will definitely boost your efficiency and flexibility.

SPECIFICATIONS

Model River 3

- Highly interesting price/performance ratio
- 25 amp. output
- Comprehensive storage options for parameters
- Water as rinsing liquid
- Easy to maintain breadboard system
- Small database system
- Incl. 2-axis digital display

Optional equipment:

- Pneumatic electrode quick-change system
- Automatic depth switch-off
- External addition tank
- and a good deal more.

Traverse paths X/Y (mm)	300 x 200
Max. worktable size (mm)	350 x 250
Max. workpiece height (mm)	180
Traverse path W axis (mm)	350
Traverse path Z axis (mm)	200
Max. workpiece weight (kg)	150
Electrode diameter (mm)	0,3 - 3,0
Max. output	25 Amp.
Max. power consumption	3.8 KVA
Dimensions (mm)	(W)1000 x (H)2000 x (D)1100
Machine weight (kg)	850



3020 NB



Model 3020 NB

- Supreme quality and precision
- Automatic depth switch-off included as standard at Huber
- Comprehensive storage options for parameters
- Own filter circulation
- Starting holes from 0.3 up to 3.0 mm, special dimensions on request
- 32 amp. standard output

Optional equipment:

- Connection to the water circuit of the wire eroding machine
- Axis digital display (German version incl.)
- Special types made up to customer's specifications
- and a good deal more.

SPECIFICATIONS

Traverse paths X/Y (mm)	300 x 200
Max. worktable size (mm)	460 x 210
Max. workpiece height (mm)	180
Traverse path W axis (mm)	-
Traverse path Z axis (mm)	350
Max. workpiece weight (kg)	150
Electrode diameter (mm)	0,3 - 3,0
Max. output	32 amp.
Dimensions (mm)	(W)1200 x (H)2100 x (D)1110
Machine weight (kg)	600

3525 NB



Model 3525 NB

- Supreme quality and precision
- Automatic depth switch-off included as standard at Huber
- Comprehensive storage options for parameters
- Own filter circulation
- Starting holes from 0.3 up to 3.0 mm, special dimensions on request
- 32 amp. standard output

Optional equipment:

- Connection to the water circuit of the wire eroding machine
- Axis digital display (German version incl.)
- Special types made up to customer's specifications
- and a good deal more.

SPECIFICATIONS

Traverse paths X/Y (mm)	350 x 250
Max. worktable size (mm)	600 x 300
Max. workpiece height (mm)	330
Traverse path W axis (mm)	200
Traverse path Z axis (mm)	350
Max. workpiece weight (kg)	250
Electrode diameter (mm)	0,3 - 3,0
Max. output	32 amp.
Dimensions (mm)	(W)1200 x (H)2100 x (D)1110
Machine weight (kg)	800



3020 ZA



SPECIFICATIONS

Model 3020 ZA

- Unbeatable price/performance ratio
- 3-axis digital display
- Comprehensive storage options for parameters
- Automatic depth switch-off included as standard at Huber
- Starting holes from 0.1 to 3.0 (optionally up to 6.3 mm)
- Own filter circulation with separate filter housing
- High standard performance
- and a good deal more.

Optional equipment:

- Infinitely variable swivelhead, also as motor-driven version
- Pneumatic electrode quick-change system (option)
- Output booster up to 64 amp.
- Connection to the water circuit of the wire eroding machine
- Conversion for carbide metal machining
- and a good deal more.

Traverse paths X/Y (mm)	300 x 200
Max. worktable size (mm)	460 x 210
Max. workpiece height (mm)	180
Max. workpiece weight (kg)	150
Electrode diameter (mm)	0.1 - 3.0 / opt. 3,1 - 6,3
Max. output	32 amp. / opt. 64 amp.
Dimensions (mm)	(W)1200 x (H)2100 x (D)1100
Machine weight (kg)	600



Opt. Equipment ZA series: Pneumatic electrode quick-change system



3525 ZA

Fig. shows optional equipment - 3525 ZA with swivelhead

SPECIFICATIONS

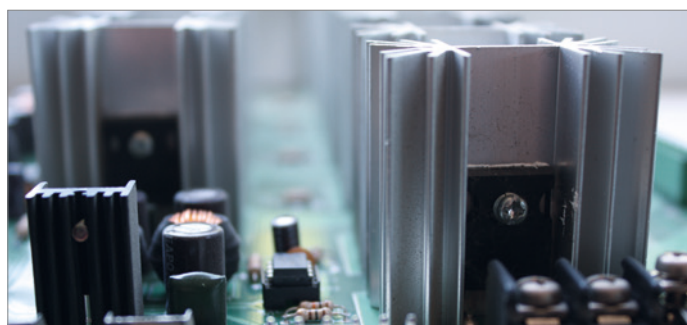
Model 3525 ZA

- Unbeatable price/performance ratio
- 3-axis digital display
- Comprehensive storage options for parameters
- Automatic depth switch-off included as standard at Huber
- Starting holes from 0.1 to 3.0 (optionally up to 6.3 mm)
- Own filter circulation with separate filter housing
- High standard performance
- and a good deal more.

Optional equipment:

- Infinitely variable swivelhead, also as motor-driven version
- Pneumatic electrode quick-change system
- Output booster up to 64 amp.
- Full water bath machine
- Connection to the water circuit of the wire eroding machine
- Conversion for carbide metal machining
- External filter tank with large filter element and water conditioning unit
- and a good deal more.

Traverse paths X/Y (mm)	350 x 250
Max. worktable size (mm)	600 x 300
Max. workpiece height (mm)	300
Max. workpiece weight (kg)	250
Electrode diameter (mm)	0.1 - 3.0 / opt. 3,1 - 6,3
Max. output	32 amp. / opt. 64 amp.
Dimensions (mm)	(W)1200 x (H)2100 x (D)1100
Machine weight (kg)	800



Opt. Equipment ZA series: 64 amp. generator



4535 ZA



Model 4535 ZA

- Supreme quality and precision
- 3-axis digital display
- Comprehensive storage options for parameters
- Own standard filter circulation with 3-chamber stainless steel tank
- Automatic depth switch-off included as standard at Huber

Optional equipment:

- Infinitely variable swivelhead, also as motor-driven version
- Pneumatic electrode quick-change system (option)
- Output booster up to 64 amp.
- Full water bath machine
- Connection to the water circuit of the wire eroding machine
- Conversion for carbide metal machining
- External filter tank with large filter element and water conditioning unit
- and a good deal more.

SPECIFICATIONS

Traverse paths X/Y (mm)	450 x 350
Max. worktable size (mm)	600 x 300
Max. workpiece height (mm)	350
Max. workpiece weight (kg)	600
Electrode diameter (mm)	0.1 - 3.0 / opt. 3.1 - 6.3
Max. output	32 amp. / opt. 64 amp.
Dimensions (mm)	(W)1600 x (H)2300 x (D)1600
Machine weight (kg)	1000

5540 ZA



Model 5540 ZA

- Supreme quality and precision
- Low worktable
- Comprehensive storage options for parameters
- External tank as standard
- To be loaded using forklift truck
- Operating instructions incl. suggested parameters for various materials and for different pipe electrode diameters

Optional equipment:

- Infinitely variable swivelhead, also as motor-driven version
- Pneumatic electrode quick-change system (option)
- Output booster up to 64 amp.
- Full water bath machine
- Connection to the water circuit of the wire eroding machine
- Conversion for carbide metal machining
- External filter tank with large filter element and water conditioning unit
- and a good deal more.

SPECIFICATIONS

Traverse paths X/Y (mm)	550 x 400
Max. worktable size (mm)	800 x 600
Max. workpiece height (mm)	500
Max. workpiece weight (kg)	1000
Electrode diameter (mm)	0.1 - 3.0 / opt. 3.1 - 6.3
Max. output	32 amp. / opt. 64 amp.
Dimensions (mm)	(W)2000 x (H)2200 x (D)1800
Machine weight (kg)	1500



7550 ZA



Figure shows ZA machine including optional equipment

SPECIFICATIONS

Model 7550 ZA

- Very large traverse paths
- Solid machine engineering for maximum precision
- Comprehensive storage options for parameters
- 32 amp. standard output
- Automatic depth switch-off

Optional equipment:

- Comprehensive optional equipment and accessories
- 64 amp. generator
- Infinitely variable swivelhead
- Electrode length up to 700 mm
- External water tank with large filter element and water conditioning unit
- Also available as CNC machine
- Extensive expansion options/upgrades, e.g. full water bath (as shown)

Traverse paths X/Y (mm)	750 x 550
Max. worktable size (mm)	1100 x 600
Max. workpiece height (mm)	250 - 835
Traverse path W axis (mm)	370
Max. workpiece weight (kg)	2000
Electrode diameter (mm)	0.1 - 3.0 / opt. 3,1 - 6,3
Max. output	32 amp. / opt. 64 amp.
Dimensions (mm)	(W)2200 x (H)2260 x (D)2210 mm
Machine weight (kg)	3100





River 300



The new starting hole erosion machine River 300 by Huber offers all advantages of a CNC machine at a very attractive entry level price. In addition, the well known and proven principles of the Huber OCT machines - namely superb quality and elegant design - have consistently been integrated in this machine in order to facilitate your entrance into the world of CNC starting hole erosion technology and bring you all the advantages it has to offer.

SPECIFICATIONS

Model River 300

- Specially adapted Windows CNC software
- Touchscreen
- Parameter data base for different materials
- Prestored working functions and touch cycles
- Read-in of ISO/DXF files
- Read-in of programs
- Depth switch-off for blind hole bores
- 25 amp. output

Optional equipment:

- Pneumatic electrode quick-change system
- External addition tank
- and a good deal more.

Traverse paths X/Y (mm)	300 x 200
Max. worktable size (mm)	350 x 250
Max. workpiece height (mm)	180
Traverse path W axis (mm)	200
Traverse path Z axis (mm)	350
Max. workpiece weight (kg)	150
Electrode diameter (mm)	0,3 - 3,0
Max. output	25 Amp.
Max. power consumption	3.8 KVA
Dimensions (mm)	(W)1000 x (L)1100 x (D)2000
Machine weight (kg)	850



River 600



SPECIFICATIONS

Model River 600

- Compact design combined with very long traverse paths
- Proven technology and precision
- Water as rinsing liquid
- Network connection, interface RS 232
- Read-in of programs, DXF or ISO files
- Dialogue programming
- Predefined touch and drilling cycles
- Parameter data bases for different diameters/materials
- High performance

Optional equipment:

- Full water bath up to 300 mm
- 12-fold electrode changer (ATC)
- 4-fold guide changer (AGC)
- Windows user surface with touchscreen, USB
- Up to 6-axis control available (Windows based)
- Tie-in of rotary or swivel table possible, control via internal software
- Water tank 180 L - 600 L with large filter and water conditioning unit
- Output booster up to 64 amp.

Traverse paths X/Y (mm)	600 x 400
Max. worktable size (mm)	600 x 400
Max. workpiece height (mm)	400
Traverse path W axis (mm)	400
Traverse path Z axis (mm)	300
Max. workpiece weight (kg)	800
Electrode diameter (mm)	0.1 - 3.0 / opt. 3,1 - 6,3
Max. output	25 / 32 / 64 amp.
Max. power consumption	3.8 KVA
Dimensions (mm)	(W)1000 x (H)2300 x (D)1500
Machine weight (kg)	approx. 1100





3525 CA



Figure shows model 3525 CA



Figure shows model 3525 CA with optional equipment

SPECIFICATIONS

Model 3525 CA

- Deionised water as rinsing liquid
- Extensive machine range
- 3-axis or 4-axis control (modular expansion as an option)
- Dialogue programming with self-explanatory logical menu guide
- Read-in & storage of programs, DXF, ISO and other file formats
- High-precision blind hole bores
- Multi-language GUI available

Optional equipment:

- Output booster up to 64 amp.
- Electrode quick-change system
- Automatic electrode changer (ATC)
- Automatic guide changer (AGC)
- Full water bath machine
- Water conditioning unit
- Dielectric cooler
- Oil-bath type with automatic fire extinguisher
- Expandable up to 8-axis control
- Windows user surface with touch screen up to 6 axes, incl. USB port, and a good deal more

Traverse paths X/Y (mm)	350 x 250
Max. worktable size (mm)	600 x 300
Max. workpiece height (mm)	330
Max. workpiece weight (kg)	250
Electrode diameter (mm)	0.1 - 3.0 / opt. 3.1 - 6.3
Max. output	32 amp. / opt. 64 amp.
Dimensions (mm)	(W)1200 x (H)2100 x (D)1100
Machine weight (kg)	800





4535 CA



SPECIFICATIONS

Model 4535 CA

- Deionised water as rinsing liquid
- Extensive machine range
- 3-axis or 4-axis control (modular expansion as an option)
- Dialogue programming with self-explanatory logical menu guide
- Read-in & storage of programs, DXF, ISO and other file formats
- High-precision blind hole bores
- Multi-language GUI available

Optional equipment:

- Output booster up to 64 amp.
- Electrode quick-change system
- Automatic electrode changer (ATC)
- Automatic guide changer (AGC)
- Full water bath machine
- Water conditioning unit
- Dielectric cooler
- Oil-bath type with automatic fire extinguisher
- Expandable up to 8-axis control, and a good deal more

Traverse paths X/Y (mm)	450 x 350
Max. worktable size (mm)	500 x 400
Max. workpiece height (mm)	350
Max. workpiece weight (kg)	600
Electrode diameter (mm)	0.1 - 3.0 / opt. 3.1 - 6.3
Max. output	32 amp. / opt. 64 amp.
Dimensions (mm)	(W)1600 x (H)2300 x
Machine weight (kg)	1000





5540 CA



Figure shows machine including optional equipment

7550 CA



Figure shows model 7550 CA with optional equipment

Model 5540 CA

- High standard performance
- Deionised water as rinsing liquid
- Extensive machine range
- 3-axis or 4-axis control (modular expansion as an option)
- Dialogue programming with self-explanatory logical menu guide
- High-precision blind hole bores
- Multi-language GUI available
- Long proven technology developed from practice for practice
- Perfectly suited for machining large / heavy workpieces

Optional equipment:

- Output booster up to 64 amp.
- Electrode quick-change system
- Automatic electrode changer (ATC)
- Automatic guide changer (AGC)
- Full water bath machine
- Water conditioning unit
- Dielectric cooler
- Connection to the water circuit of the wire eroding machine
- and a good deal more.

Model 7550 CA

- Large traverse paths
- Solid machine engineering for maximum precision
- High standard performance
- User-friendly and self-explanatory user surface with useful basic functions
- Network connection
- Read-in of ISO/DXF files

Optional equipment:

- Higher generator output 64 amp. with reinforced wiring
- Automatic electrode changer ATC
- Automatic guide changer AGC
- Dielectric cooler
- 6-axis control
- High full water bath
- Tie-in of rotary indexing table possible
- Extensive upgrading options (see figure)
- and a good deal more.

SPECIFICATIONS

Traverse paths X/Y (mm)	550 x 400
Max. worktable size (mm)	800 x 600
Max. workpiece height (mm)	500
Max. workpiece weight (kg)	1000
Electrode diameter (mm)	0.1 - 3.0 / opt. 3.1 - 6.3
Max. output	32 amp. / opt. 64 amp.
Dimensions (mm)	(W)1800 x (H)2200 x (D)2000
Machine weight (kg)	1500

SPECIFICATIONS

Traverse paths X/Y (mm)	750 x 550
Max. worktable size (mm)	1100 x 600
Max. workpiece height (mm)	345
Max. workpiece weight (kg)	750
Electrode diameter (mm)	0.1 - 3.0 / opt. 3.1 - 6.3
Max. output	32 amp. / opt. 64 amp.
Dimensions (mm)	(W)2050 x (H)2200 x (D)2000
Machine weight (kg)	2950

**8060 CA**

Model 8060 CA

- Deionised water as rinsing liquid
- Extensive machine range
- 3-axis or 4-axis control (modular expansion as an option)
- Dialogue programming with self-explanatory logical menu guide
- Read-in & storage of programs, DXF, ISO, and other file formats
- High-precision blind hole bores
- Multi-language GUI available
- Perfectly suited for machining large / heavy workpieces

Optional equipment:

- Output booster up to 64 amp.
- Electrode quick-change system
- Automatic electrode changer (ATC)
- Automatic guide changer (AGC)
- Full water bath machine
- Water conditioning unit
- Dielectric cooler
- Oil-bath type with automatic fire extinguisher
- Expandable up to 8-axis control, and a good deal more

SPECIFICATIONS

Traverse paths X/Y (mm)	800 x 600
Max. worktable size (mm)	800 x 600
Max. workpiece height (mm)	500
Traverse path W axis (mm)	500
Traverse path Z axis (mm)	500
Max. workpiece weight (kg)	1800
Electrode diameter (mm)	0.1 - 3.0 / opt. 3.1 - 6.3
Max. output	32 amp. / opt. 64 amp.
Max. power consumption	3.8 kW
Dimensions (mm)	(W)1000 x (H)2000 x (D)1100
Machine weight (kg)	850
Input voltage	400 V -3

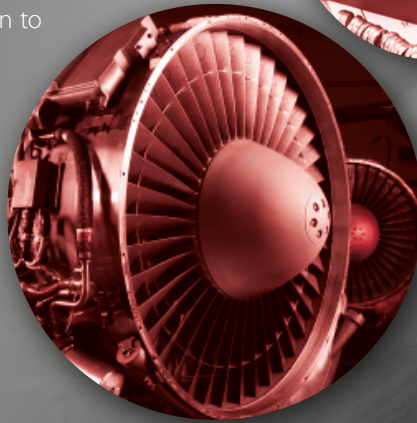
Machines and developments for the machining of special materials or for special customer requirements

Special machines and custom-tailored solutions

Over the years, Huber, Daniel Bayer Technical Solutions have developed and custom-tailored special starting hole erosion machines in order to meet niche requirements and offer these customers a solution to their task at hand.

During this time, machines and optional equipment have been newly developed, parameters have been worked out, and components composed or tuned in a way that e.g. the high demands of various renowned manufacturers of **carbide metal and special materials** or **carbide metal tools** can be fulfilled. Even innovations from the fields of raw materials were machined on our machines before their world premiere. The results have always more than convinced the customers in daily application.

Even for the most demanding requirements from sectors like the automotive or aerospace industry, we were able to develop and build special machines including detailed solutions according to customer requests.



Custom-tailored detailed solutions

The close cooperation with various customers and our steady efforts to fulfill even the most complex tasks first of all allow for thinking up innovative detailed solutions; part of such solutions is later integrated into the standard machines as option following a certain probation period. Always to the advantage of our customers.



3525 ZB/SK



Model 3525 ZB/SK

- Manual Starting-Hole Drilling Machine
- Controlled Z axis
- Extensive parameter data base
- Swivelhead right/left 0 - 45°
- Full water bath
- Optionally water or oil version
- 180 L water tank with optional water conditioning unit and preselectable conductivity value
- Large filtering area
- Adjustable dielectric fill level
- Quick replenishing pumps for work basin
- Pump(s) for filter and/or resin circuit

Optional equipment:

- Full water bath 200 or 300 mm
- Optionally water or oil version
- Fire extinguisher for oil operation
- 64 amp. output increase
- Additional water tanks from 180 to 600 L, also available with optional water conditioning unit and conductivity value control
- Increase of max. workpiece height
- Intermediate guide for electrodes

SPECIFICATIONS

Traverse paths X/Y (mm)	350 x 250
Max. worktable size (mm)	600 x 300
Max. workpiece height (mm)	300
Max. workpiece weight (kg)	250
Electrode diameter (mm)	0.1 - 3.0 / opt. 3,1 - 6,3
Max. output	32 amp. / opt. 64 amp.
Dimensions (mm)	(W)2592 x (H)2210 x (D)1100
Machine weight (kg)	1350

400 DE



400 DE

- Combined drilling and die sinking head
- High-quality man-machine interface, industrial PC
- User-friendly due to dialogue programming, G/M code programming
- Parameter proposal after entry for die sinking function
- Automatic electrode change and intelligent electrode compensation
- For EDM drilling function: Autom. electrode change in drilling operation, if electrode is worn
- After reaching the drilling depth, autom. retraction via the workpiece
- Various depth measurement options
- Flexible and serviceable by customer:
 - Self-diagnostic system
 - Indication of hardware status
 - Alarm history
- Network connection
- Different operation languages selectable
- Various die-sinking functions (machine path indication, display of error messages, Auto Edit function, macro programming, circular function, multiple machining)
- Various drilling functions

SPECIFICATIONS

Traverse paths X/Y (mm)	400 x 300
Max. worktable size (mm)	580 x 430
Max. workpiece height (mm)	300
Max. workpiece weight (kg)	150
Electrode diameter (mm)	0.1 - 3.0 / opt. 3,1 - 6,3
Max. output	60 amp.
Dimensions (mm)	(W)2575 x (H)2250 x (D)1835
Machine weight (kg)	1800



River 600



SPECIFICATIONS

Model River 600

- Pneumatic electrode quick-change system
- Water as rinsing liquid
- Read-in of DXF/ISO data
- Dialogue programming
- Predefined touch and drilling cycles
- Parameter data base
- Network connection

Optional equipment:

- Full water bath with 300 mm
- Tank with water conditioning unit 180 - 600 L with large filter
- 12-fold electrode changer (ATC)
- 4-fold guide changer (AGC)
- Windows control of up to 6 axes
- Connection of rotary indexing table
- Intermediate guide
- Handbook
- Output increase to 32 amp. or 64 amp.
- Conversion to oil-type operation

Traverse paths X/Y (mm)	600 x 400
Max. worktable size (mm)	600 x 400
Max. workpiece height (mm)	400
Max. workpiece weight (kg)	800
Electrode diameter (mm)	0.1 - 3.0 / opt. 3,1 - 6,3
Max. output	25 amp. / opt. 32 amp. or 64 amp.
Dimensions (mm)	(W)1500 x (H)1000 x (D)2300
Machine weight (kg)	1100





6040 CA

SPECIFICATIONS

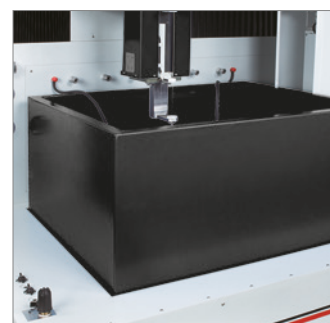
Model 6040 CA

- Special machine for carbid metal machining
- Lowerable dielectric basin
- Heavy-duty worktable - still easily accessible
- High accuracy thanks to intelligent machine concept (RAM type)
- Integrated large-capacity tank with filter cartridges
- Autom. fill level monitoring in work basin
- Quick replenishing pumps for work basin
- Read-in of ISO/DXF files
- Integration in network

Optional equipment:

- Electrode length up to 700 mm
- Changer for electrode lengths up to 700 mm
- Intermediate guide
- Windows control of up to 6 axes
- Tie-in of a rotary indexing table and programmed-controlled mode (machine software) possible
- Output booster up to 64 amp.

Traverse paths X/Y (mm)	600 x 400
Max. worktable size (mm)	800 x 500
Max. workpiece height (mm)	350
Traverse path W axis (mm)	350
Traverse path Z axis (mm)	350
Max. workpiece weight (kg)	800
Electrode diameter (mm)	0.1 - 3.0 / opt. 3,1 - 6,3
Max. output	32 amp. / opt. 64 amp.
Max. power consumption	3.8 KVA
Dimensions (mm)	(W)1780 x (H)2150 x (D)2400
Machine weight (kg)	5300
Input voltage	400 V -3





8060 CA



SPECIFICATIONS

Model 8060 CA

- Rigid and stable gantry-type machine design ensures maximum precision
- Large traverse paths
- 32 amp. standard output
- High load capacity of the worktable
- Bore holes from 0.1 to 3.0 (optionally up to 6.3 mm)
- Deionised water as rinsing liquid
- 3-axis or 4-axis control (option: modular expansion)
- Dialogue programming with self-explanatory logical menu guide
- Read-in & storage of programs, DXF, ISO and others
- High-precision blind hole bores
- Network connection possible
- Multi-language GUI

Optional equipment:

- Output booster up to 64 amp.
- Pneumatic electrode quick-change system
- Automatic electrode changer (ATC)
- Automatic guide changer (AGC)
- External tank 180 – 600 L, also available with water conditioning unit and large filter element
- Dielectric cooler
- Expandable up to 8-axis control
- Rotary indexing table can be integrated
- Swivelhead right/left 0 - 45°, and a good deal more

Traverse paths X/Y (mm)	800 x 600
Max. worktable size (mm)	800 x 600
Max. workpiece height (mm)	500
Traverse path W axis (mm)	500
Traverse path Z axis (mm)	500
Max. workpiece weight (kg)	1800
Electrode diameter (mm)	0.1 - 3.0 / opt. 3,1 - 6,3
Max. output	32 amp. / opt. 64 amp.
Dimensions (mm)	(W)2450 x (H)2520 x (D)2250
Machine weight (kg)	2500





90120 CA



SPECIFICATIONS

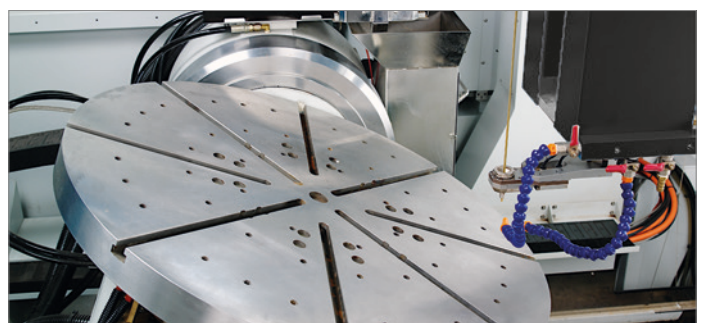
Model 90120 CA

- Large worktable and extremely long traverse paths
- Maximum precision and performance thanks to rigid machine design & construction
- Water as rinsing liquid
- Technology proven in practice
- Pneumatic electrode quick-change system
- CNC technology with powerful and robust industrial processor
- Comprehensive upgrade and customisation options
- Breakthrough detection when drilling into cavities

Optional equipment:

- Automatic electrode changer (ATC)
- Automatic guide changer (AGC)
- Windows control of up to 6 axes
- Output booster up to 64 amp.
- Electrode lengths up to 700 mm
- Intermediate guide
- Handbox
- Motor-driven swivelhead with angle preselection
- Individual software customisation possible
- Unit for right-angled dressing of electrodes
- Rotary swivelling table for workpieces up to 250 kg and a height/diameter of 700 mm

Traverse paths X/Y (mm)	900 x 1200
Max. diameter rotary indexing table (mm)	750
Max. height rotary indexing table (mm)	500
Traverse path W axis (mm)	350
Traverse path Z axis (mm)	1000
Max. workpiece weight (kg)	250
Rotational accuracy	+/- 0,003°
Electrode diameter (mm)	0.1 - 3.0 / opt. 3.1 - 6.3
Max. output	32 amp. (optional 64 amp.)
Tilting path of rotary indexing table	-15 -120° w
Dimensions (mm)	(W)2865 x (H)2568 x (D)2900
Machine weight (kg)	7000



Powerful and efficient optional equipment and accessories

Thanks to our versatile optional equipment options, HUBER - Daniel Bayer Technical Solutions offer you a high degree of customisation, individually tailored to your specific requirements and areas of expertise. This provides you with the certainty and flexibility you need to react to potentially new fields of application for your OCT starting hole erosion machine at any time while simultaneously avoiding the high replacement costs for the acquisition of whole new systems. The application spectrum of your machines will significantly be expanded allowing you to further increase the efficiency and profitability of your operation.



Addition water tank for starting hole eroding machines

- Stainless steel finish
- Standard capacity 180 L, up to 600 L available as option
- With large filter element
- Optionally available with conductivity value control and water conditioning unit



Intermediate guide and CNC electrode changer ATC (lh), CNC guide changer AGC (rh)



Opt. equipment for manual machines: Pneumatic electrode quick-change system



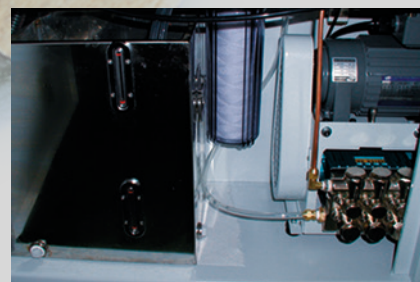
Handbox for remote control



Increase of max. workpiece height for machining high parts



Full water bath with fill level control

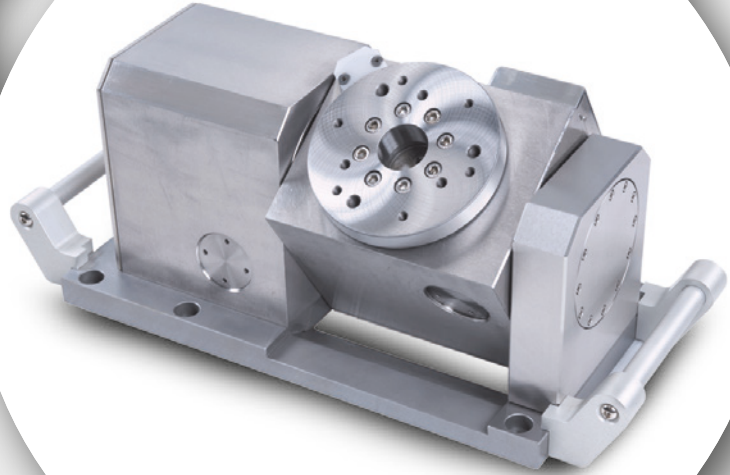


Electrical pump



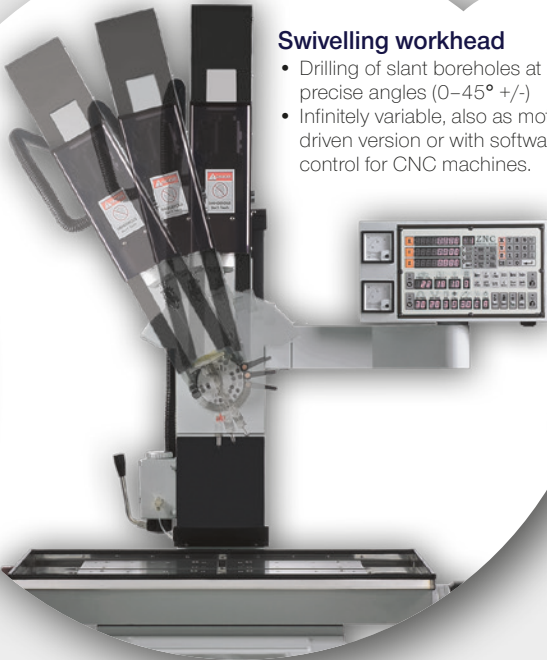
Rotary indexing table RT 115

- Waterproof design
- Available as rotary or rotary&swivel version (A or A/B)
- 2 accuracy levels due to direct and indirect measuring system



Swivelling workhead

- Drilling of slant boreholes at precise angles (0–45° +/-)
- Infinitely variable, also as motor-driven version or with software control for CNC machines.



Guide cover



Technical sprays: Cleaning and protection sprays for all applications and tasks



Pipe electrodes: Brass and copper pipes starting from 0.1 mm diameter; special pipe electrodes, and much more



Guides: All standard guides in stock, special guides available from stock as well



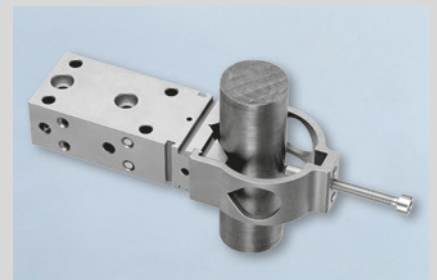
Collets; rubber seals; electrode holders for pneumatic quick-change system



Filters: Replacement filter systems for the various Huber OCT filter systems in OEM quality



Conductivity value analyser: Portable conductivity value analyser for the daily determination of the water conductivity value



Precision prism clamping system: For clamping cylindrical workpieces

HUBER – CUSTOM-TAILORED SERVICE, MACHINES AND ACCESSORIES!

- New and second-hand machines for wire erosion, die sinking erosion, starting hole erosion as well as grinding and sand blasting technology
- Consultation, demonstration and test machining in our own Demonstration Centre
- In-house application and service engineers
- Machine erection, commissioning, maintenance
- 24 hour service / 24 hour hotline
- Repair service
- Wear and spare part warehouse
- Complete delivery program for accessories all around spark erosion and blasting technology
- Delivery service
- Environmental service
- Constant further developments by solving customer-specific requirements and tasks



HUBER

DANIEL BAYER TECHNICAL SOLUTIONS